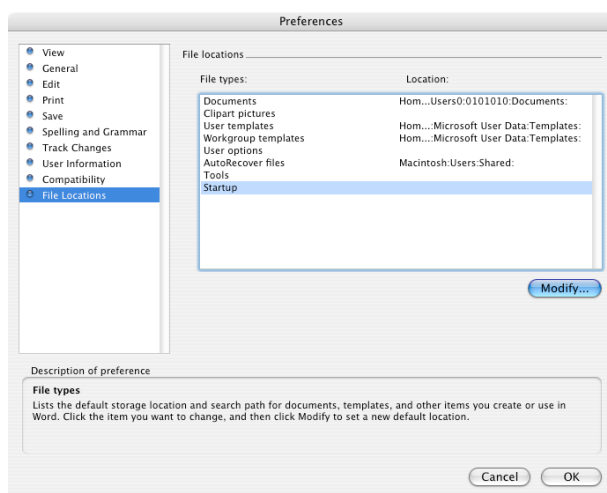
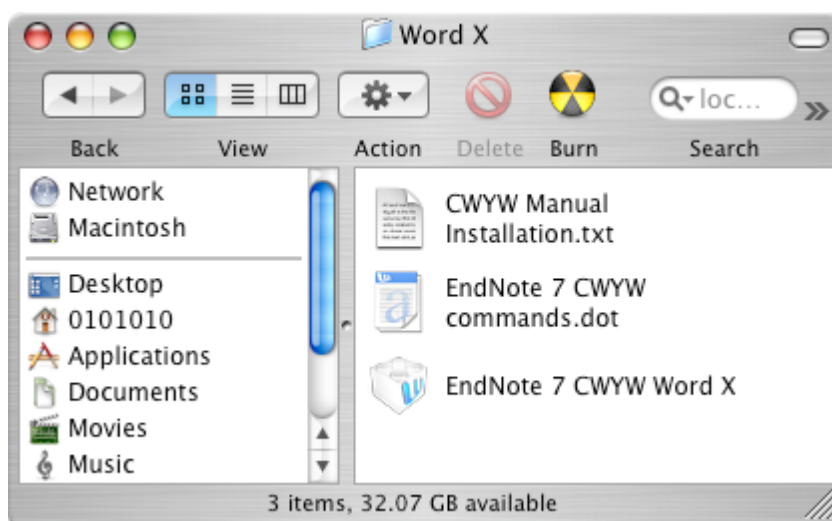


Configure Endnote "Cite While You Write" plug-in for MS Word

1. Launch Microsoft Word
2. From the menu at the top of your screen select File -> Preferences... and in the left-hand pane of the Preferences window click on File Locations.
3. Look at the "Startup" line to see the path for the designated startup folder.
4. If the Startup line is blank (shows no path) or if you would like to reset the startup folder location, select the Startup line, click Modify and select the desired folder (for example ~/Documents/Microsoft User Data). Select that folder and then click the Choose button.



5. File -> Quit to close Microsoft Word
6. In the Finder, open a new window and look for Endnote 7 in the Applications directory (shortcut Shift-⌘-A). Browse down to /Applications/Endnote 7/Cite While You Write/Word X and look for two files; Endnote 7 CWYW commands.dot and the Endnote 7 CWYW Word X plugin.



7. Open a new window (shortcut ⌘-n) and browse to the folder you specified earlier in Microsoft Word preferences, as your Startup folder. Drag the

Endnote CWYW files to copy them from /Applications/Endnote 7/Cite While You Write/Word X to your Startup folder.

8. Launch Microsoft Word. A warning dialog box opens with a caution about the plug-in:

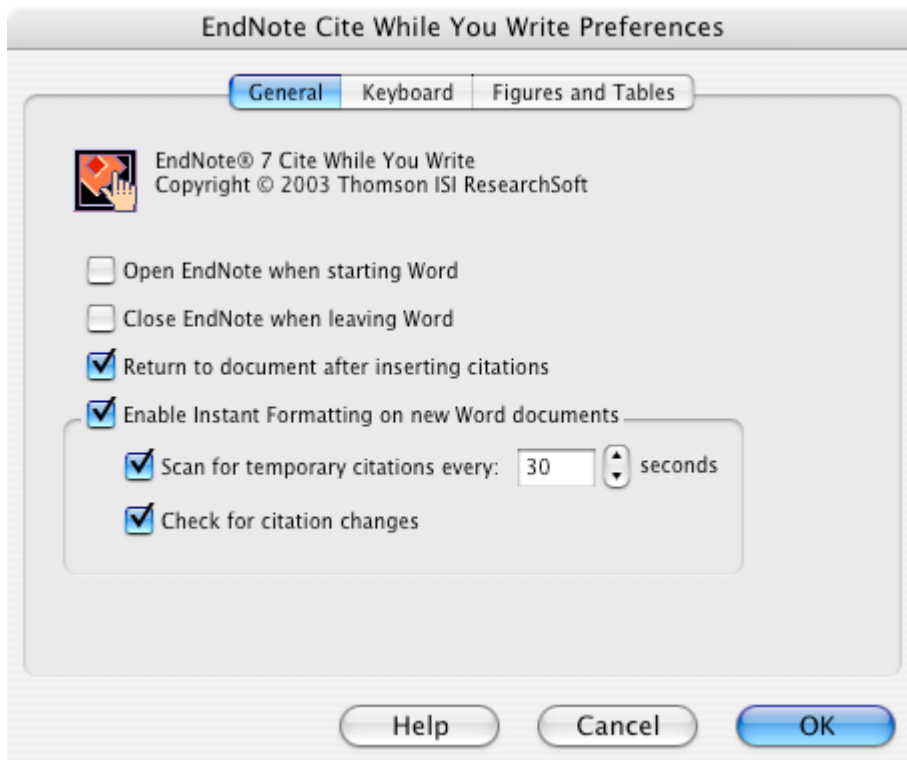


Click the Yes button if you want to proceed.

9. The Endnote palette appears; if you don't see it, or you inadvertently close it, reopen the palette from View -> Toolbars -> Endnote 7 on the menu.



10. From the Tools menu, select Tools -> Endnote 7 -> Cite While You Write Preferences...
11. Select the options you prefer; Endnote can be configured to open and close at the same time as MS Word.



12. File -> Quit to close MS Word

13. Try to re-open MS Word. If Word opens without any problems, then you successfully configured Endnote and need not read on.

If Word keeps crashing at startup time, so that you cannot open any documents, then you have a problem with a bug in the software. You need to go back to the Finder and if you have closed it, reopen your Word Startup folder.

Your Startup folder contains the two CWYW files which you copied from Endnote: `Endnote 7 CWYW commands.dot` and the `Endnote 7 CWYW Word X` plugin. Select these files and drag them to the trash. If you are not using the latest version of our Standard Operating Environment (SOE), then please contact Faculty Computing for assistance.